



Young Adult Project July 2021

Location: Ica, Peru

Project Dates: July 1-11, 2021

Optional Excursion: July 11-13, 2021

Total Fee: \$1,150*

Optional Excursion: \$500

Final Deadline: May 17, 2021

**All amounts are listed in U.S. dollars.*

International flights are not included in the participation fee



PROJECT OVERVIEW

Maranatha's Young Adult Project is a special opportunity for young people to serve together on a mission trip. This trip is open to individuals ages 18-35.

Volunteers on this project will be one of the many volunteer groups to work at the La Tinguña Adventist School, in a suburb of Ica, Peru. The large Education and Evangelism Center will have eight classrooms, a large auditorium/gymnasium, administrative offices, and bathrooms.

La Tinguña Adventist School

This Adventist congregation started meeting in this location in 1975, and since that day, they have prayed tirelessly for a school where their children can go to school and learn Adventist Christian values. They have struggled to raise the money to build a school and have suffered many disappointments over the years. In 2019, Maranatha agreed to build them a school! And in October 2019, they tore down their existing church to make room for the new school. The congregation has truly stepped out in faith.

Construction: Volunteers will lay block on one portion of the large building.

Outreach*: Due to current COVID-19 restrictions in Peru, this project does not have any scheduled children's ministry or health outreach programs.

COVID-19

Maranatha is moving forward on preparations for this mission trip in faith that the project will take place as planned. However, there is always a chance that situations will change as countries adapt to the COVID-19 pandemic. If you are planning on participating, please go ahead and register. However, you may consider waiting to book flight itineraries or choose to purchase additional flight insurance to minimize potential risks, such as schedule adjustments or flight cancellations. We will update you if the status of this project changes.

MARANATHA IN PERU

Maranatha is a responsive organization that works with the Seventh-day Adventist Church; all efforts are by invitation from local leadership.

Between 2004 and 2006, Maranatha constructed nearly 100 churches in Peru to provide places of worship for the growing number of congregations. As Seventh-day Adventist membership has continued to grow in the country, church leadership in Peru asked Maranatha to return to build more churches and schools. The first project for this latest effort began in late 2019.

Accommodations

Our group will stay at the Casa Sur Hotel. The group will eat meals and have worship in the dining room. Individuals should plan on staying in multiple-occupancy rooms with a roommate(s).

Amenities

Room Style	Multiple twin beds
En-Suite Bathroom	Yes
Hot Water	Yes
Bed Linens and Towels	Yes, but not washcloths
Air Conditioning	Yes
WiFi	Yes
Laundry	Yes, at an additional expense
Pool	Yes
Distance to Work Locations	20 min

Excursions

Maranatha projects usually include a short excursion and may offer an extended excursion as an optional add-on. If you choose to add any other excursions without Maranatha, please schedule them for before or after the project dates, so you won't miss out on any of the Maranatha experience.

Included Excursion - Huacachina

One afternoon during the week, the group will wrap work early to enjoy some of the local surroundings. Prior to departing Ica, the group will visit a Teja factory. Tejas are a popular Peruvian candy made of caramel and pecans that was first created in Ica. Visitors will learn how to make the original version with the option to buy other flavored varieties if they wish. Then the group will travel approximately 20 minutes outside of the Ica to a small oasis nestled among the sand dunes called Huacachina. Volunteers will have the opportunity to take a dune buggy ride up the sand dune where they can simply enjoy the views. The more adventurous can try their hand at sand boarding down the dune, and those who choose not to do the dune buggy can rent paddle boats to enjoy the oasis. There are several shops surrounding the water that have souvenirs as well.

Optional Excursion - Machu Picchu - \$500

Machu Picchu is one of Peru's most popular tourist destinations, located high in the Andes Mountains. The ruins of this ancient Incan city have been voted one of the "New" Seven Wonders of the World, and it is a UNESCO World Heritage Site. It was originally built in 1450 as an estate for the Incan emperor, but it was abandoned during the Spanish Conquest. The ruins are truly a sight to behold with the city set on a grassy plateau and the peak of Huayna Picchu behind it.

PROJECT SCHEDULE

VOLUNTEER PROJECT

Thursday, July 1
Arrival in Lima

Friday, July 2
Travel to Ica, construction orientation

Saturday, July 3
Worship with the local congregation

Sunday - Friday, July 4 - July 9
Work days with midweek local excursion

Saturday, July 10
Worship with the local congregation

Sunday, July 11
Departure from Lima, Peru or continue on the optional excursion.

OPTIONAL EXCURSION

Sunday, July 11
Travel to Cusco, Peru

Monday, July 12
Machu Picchu

Tuesday, July 13
Sacred Valley tour and evening departures from Cusco



This excursion is an additional \$500 per person. The fee covers double-occupancy accommodations for two nights, all meals, ground transportation, insurance, and all entrance fees and tour guides. Flights are not included; see the travel information section below.

Deadline: Non-refundable train tickets must be purchased on May 17. On this date, \$250 becomes non-refundable. Please include passport copies with your registration.

Sunday, July 11

- Arrive in Cusco
- Travel down into the Sacred Valley to Urubamba, which will help you adjust to the altitude

Monday, July 12

- Travel by bus and train to the town of Aguas Calientes
- After lunch, go on guided tour of the Machu Picchu ruins
- Return to hotel for dinner

Tuesday, July 12

- Visit sites in the Sacred Valley
- Explore old town district of Cusco, souvenir shopping opportunity
- Afternoon departures from Cusco to Lima

Leadership

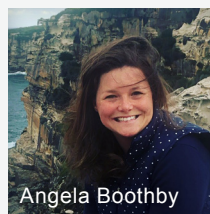
Angela Boothby

Project Coordinator

We Need Your Help

The team is looking for a few additional leaders. If you would be interested in leading out in any of these areas, please contact Maranatha at (916) 774-7700.

- Team Medic



Angela Boothby

Expenses

Participation Fee: \$1,150

Optional Machu Picchu Excursion: \$500

Final Deadline: May 17, 2021

All amounts are listed in U.S. dollars. Ages are determined on the start date of the project. Participation fees are tax-deductible. Excursion fees are not tax-deductible.

Payments* can be made in three ways:

- Check sent to the Maranatha office in California (include a note with your name and "Young Adult Project July 2021")
- Online using the project payment link in your confirmation email
- Over the phone at (916) 774-7700

**Canadian tax-deductible payments must be made by check to the Maranatha Volunteers International (Canada) Association (address located at the end of this information packet) in order to receive a*

TYPICAL DAILY SCHEDULE

7:00 a.m.	Breakfast
7:30 a.m.	Group worship
8:00 a.m.	Depart for construction/clinics
12:00 noon	Lunch
4:00 p.m.	Return from work
6:00 p.m.	Dinner
7:00 p.m.	Group worship

The key word for mission trips is FLEXIBILITY. The above schedule is our plan, but it may be adjusted due to weather or other unforeseen circumstances.

WHAT'S INCLUDED

- ☒ Accommodations
- ☒ Vegetarian meals
- ☒ Ground transportation
- ☒ Short-term insurance
- ☒ Portion of construction costs
- ☒ Portion of outreach activities
- ☒ T-shirt and luggage tags
- ☒ Local excursion activities and entrances

ESTIMATE OF ADDITIONAL COSTS

- ☐ **Flight to Lima, Peru:** \$800-1200
- ☐ **Passport:** \$130 or \$110 for renewal
- ☐ **Optional Machu Picchu Excursion:** \$500
- ☐ **Domestic Flight (Optional Excursion):** \$100-200
- ☐ **Covid-19 PCR Tests:** \$150+

receipt. At this time, Maranatha cannot issue tax-deductible receipts for credit card payments.

If you are fundraising or receiving donations, please have donations sent directly to you, or work with your local church treasurer to collect funds at the church and issue tax-deductible receipts. Do not have donors send individual small checks directly to Maranatha. If you have questions regarding this process, please contact Maranatha.

ABOUT PERU

- Peru is located on the western coast of South America.
- The country has three distinct regions: the coastal desert, the Andes Mountain highlands, and the tropical Amazon basin.
- The Incan Empire ruled the region until the 1500s when Spanish conquistadors invaded.
- The Quechua and Aymara people are two cultural people groups in Peru that descended from the Incas.
- Peru is currently the 48th largest economy in the world.
- The Seventh-day Adventist message came into Peru in the early 1900s.

Foreign Cash

Peru uses the Sol, which has an exchange rate of approximately 3 Soles to \$1 USD (Nov 2020). This exchange can be made at the airport, or the project coordinator can also exchange money for you at a flat rate in increments of \$10. Many countries offer better exchange rates for larger bills (\$50s and 100s), so if you bring small bills you might get a different exchange rate. Any cash you bring should be in new, unmarked, and unturned bills.

While some establishments accept credit and debit cards, most small shops only accept cash. It is wise to let your credit card company know the dates you will be traveling so they don't block your card when you use it in a foreign country.

Tipping

Your project coordinator will take care of paying tips on group excursions. If you feel like someone (guide, hotel staff, etc) has provided excellent service during your trip, you are more than welcome to show your gratitude with additional tips. If you have any questions during the project about whether or not tipping would be appropriate, your project coordinator or Maranatha in-country support staff can help you understand the local culture.



FACTS AND FIGURES

Capital: Lima

Population: 31.1 million
(July 2018)

Language: Spanish, Quechua, Aymara

Climate: Varies by region and altitude. Dry in the west, tropical in the east, temperate to frigid in the Andes.

Religion: Catholic 60%, Protestant 15%, unspecified 21%

Currency: Peruvian Sol



Electricity

- **Current:** 220-240 volt AC
- **Outlet:** Type A and C

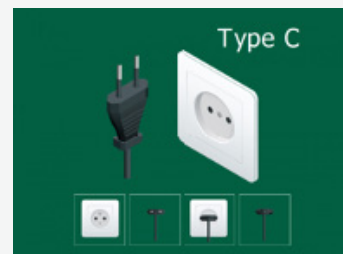
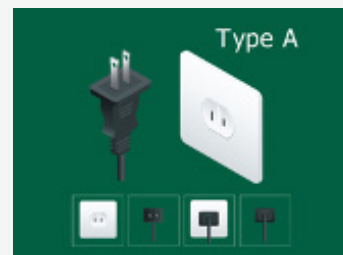
Non-dual-voltage appliances will need a voltage converter in addition to the plug adapter. Grounded plugs and plugs similar to Type A, but with prongs of different height (standard in the U.S), will not usually work in Peru.

Weather

Weather patterns can change suddenly, so Maranatha recommends that volunteers check the 10-day forecast for the project area before traveling.

Ica | Ica has mild, dry weather year-round. Expect temperatures in the mid 60s to upper 70s. In June, Ica rarely experiences any precipitation.

Cusco | Expect cool temperatures in the upper 30s and low 60s during the day and dipping into the low 30s at night. It can be windy up in the mountains. It will also be the start of the rainy season, so afternoon thunderstorms will be common.



TRAVEL INFORMATION

Please complete the online registration and wait for confirmation from Maranatha before purchasing your airfare.

If this is your first time traveling abroad (or you need a refresher course), you may want to check out Maranatha's [International Traveler Guide](https://maranatha.org) (available at maranatha.org under volunteer resources), which shares tips on everything from booking travel to communicating with those at home.

Flights

Please be careful to follow these guidelines when booking your travel. If you arrive or depart outside these posted windows, you may have long wait times at the airport or be responsible for paying the additional transportation costs for your individual airport transfer. If you have questions about your itinerary, please contact Maranatha prior to booking to avoid any additional charges.

For those joining the excursion, sometimes booking the domestic ticket and your international flights together can be difficult. A travel agent can help you look at all flight options. It might be more cost effective to book a round trip ticket to and from Lima and book your domestic tickets separately. Make sure your itinerary has a long enough layover in Lima to pick up your bags and check in for your domestic flight to Cusco.

Project Only

Arrive: Lima, Peru (LIM) Thursday, July 1, between 5:30 a.m. and 8:00 a.m. OR between 7:00 p.m. and 1:45 a.m. (on the 2nd).
Depart: Lima, Peru (LIM) Sunday, July 11, between 6:00 p.m. (on the 11th), and 2:00 a.m. (on the 12th). *There is no hotel planned for the night of the 11th.*

Optional Excursion

Arrive: Lima, Peru (LIM) Thursday, July 1, between 5:30 a.m. and 8:00 a.m. OR between 7:00 p.m. and 1:45 a.m. (on the 2nd).
Transfer: Book Latam Airlines Flight #2025, on Sunday, July 11 from LIM to CUZ departing at 1:50 p.m. and arriving at 3:09 p.m.
Depart: Cusco, Peru (CUZ) Tuesday, July 13, after 5:00 p.m.

Arriving Early or Staying Late?

You may choose to extend your travel before or after the project. Since our volunteers bring so much to the shared experience of the project, we ask that you participate in the entirety of the Maranatha project (during the advertised dates). Any additional travel outside of the Maranatha project should be scheduled for before or after the project dates to avoid mid-project interruptions. If you choose to add additional travel, you are responsible for making your own hotel and transportation arrangements for the time outside of the arrival and departure windows listed above. If you have any questions, feel free to call Maranatha at (916) 774-7700.

Travel Resources

- **CI Azumano Travel:** 800-454-4099 or by email with Erle Dpenha or Azumano Team at corporatetravel@ciazumano.com
- **Butler Travel:** 503-879-5005 or by email with Nathanael at nathan@butlertravel.com or with Ellen at ellen@butlertravel.com.

Entry Requirements

Below are the requirements for U.S. and Canadian citizens. If you hold a passport from another country, please consult the Peruvian embassy or consulate in your home country for entrance requirements.

Passport | All passports must be valid for at least six months from the dates of intended travel (January 11, 2022). If you do not have a passport, United States (U.S.) citizens can apply at any U.S. post office or online at <http://travel.state.gov>. Canadian citizens can apply online at www.passport.gc.ca. It can take up to two months to complete the entire process, so plan accordingly to give yourself enough time to receive your passport.

COVID Requirements | As of April 2021, U.S. and Canadian travelers to Peru must complete the following requirements. Requirements could change at any time. Volunteers should check with their airlines prior to travel, and Maranatha will send updates as more information becomes available.

- Negative COVID-19 PCR test 48 hours prior to travel to Peru
- Peru Ministry of Health affidavit form with geolocation authorization (this link will be sent to you)
- Another negative COVID-19 PCR test after arrival in Lima (\$75-100)
- Another negative COVID-19 PCR test prior to departure for home (\$75-100)
- Mask usage in airports and public locations

Luggage Considerations

Please check with your airline or travel agent for luggage weight and piece allowances for each portion of your itinerary. In addition to your checked bags, airlines usually allow one carry-on item, as well as a personal item, such as a purse or small day pack. However, each airline is different, so read through your airlines baggage policy before you head to the airport.

Sometimes bags are delayed, so please bring your personal medications and a day's worth of clothes and toiletries in your carry-on luggage, just in case. We recommend that you keep your carry-on luggage with you; do not "gate-check" your bags, especially if the bags have electronics or camera gear.

HEALTH AND SAFETY

Travel Safety

Understanding the culture and educating yourself about travel in Peru is the best way to keep safe. Below are a few tips for you to consider.

- Leave valuables (expensive or sentimental) at home.
- Dress conservatively; a flashy wardrobe attracts more attention.
- Use a money belt or concealed pouch for passports and cash. Watch your wallet.
- Don't leave valuables unattended in open sight.
- Avoid marginal areas of cities, dark alleys, and crowds. Use caution and keep moving if strangers, including vendors, approach you on the street.
- Don't travel alone or at night.

Short Term Travel Insurance

All volunteers will be covered by a short-term insurance policy from the time they leave their home country until the time they arrive back in their home country. The policy does not have a deductible and covers accidents and illnesses. As with all insurances, some exclusions apply. Maranatha does not carry or maintain health, medical, workers compensation, or disability insurance coverage. The coverage amounts and details can be found at www.maranatha.org/insurance.

For volunteers extending their travel before or after a project, the insurance will start and end with the Maranatha project dates. If you would like to extend your coverage for your extra travel at your own expense, contact Maranatha.

You will receive a brochure, prior to your project, listing the policy number and contact information for assistance or emergencies during your travel.

Medical Recommendations

While Maranatha does everything in our power to ensure the safety of our volunteers, it is also advisable to do your own research when it comes to the medical precautions. We recommend that you schedule a consultation with your physician or a travel clinic to discuss the medical risks in Peru and the ways to minimize them. If at any time during the project you start to feel sick, speak with the project medical professional and the project leader as soon as possible.

COVID-19 and Other Viruses

When traveling, you may be exposed to viruses, such as the recent COVID-19 virus. We recommend a few simple tips to minimize your risk. Depending on the situation when this project takes place some of these precautions (such as mask usage in certain situations) may be required during the project.

- Practice social distancing by keeping a distance of 6 feet between you and others when possible.
- Wear a face covering over your nose and mouth.
- Avoid close contact with people who are sick.
- Self-monitor for symptoms such as cough and fever.
- Wash your hands often, with soap and water, for at least 20 seconds.
- If you don't have access to soap and water, use hand sanitizer with at least 60 percent alcohol, rubbing your hands until dry.
- Avoid touching your face, especially your eyes, nose, and mouth.
- Clean and disinfect frequently touched surfaces using disinfectant wipes.
- Wash your hands after shaking hands with others or handling cash.
- Get adequate sleep.
- Drink plenty of purified water.
- Try to eat a well-balanced diet, avoiding sugar.

VACCINES

TETANUS

Required by Maranatha

TYPHOID

Recommended by CDC

HEPATITIS A

Recommended by CDC

Altitude Sickness

Cusco, Peru is located at an elevation above 8,000 feet. Travelers to these high elevations are at risk for altitude sickness. For this project, you will need to sign a consent form as part of the registration process. Visitors should discuss the trip with their personal physician prior to departing. Maranatha has a doctor on-call at these high elevations, and an altitude sickness medication will be available. Some ways to minimize symptoms are to eat lightly, move slowly, and not over-exert yourself.

Symptoms of Altitude Sickness

- Headache
- Dizziness
- Shortness of breath
- Nausea
- Fatigue
- Difficulty sleeping
- Loss of appetite

High Risk Factors

- Medications
- Lung or heart disease
- Asthma
- Diabetes
- Pregnant

Mosquitos and Other Insects

Mosquitos and other flying insects can carry a variety of diseases including chikungunya, zika, and dengue. Personal precautions are strongly recommended to lower the risk of being bitten.

- Use a bug repellent with a 30-50 percent concentration of DEET.
- Wear long sleeves, long pants, and closed-toe shoes when possible.
- Avoid areas of standing water.
- Avoid spending a lot of time outside during dusk and dawn.

Food and Water

Food and water safety standards vary greatly from country to country, and we recommend that you exercise caution with the food and water you consume while abroad. Maranatha will provide purified water, but please bring your own reusable water bottle to refill from the large containers.

- Eat only food provided by Maranatha.
- Purchase only commercially packaged snacks, not from street stands.
- Drink only purified water and sealed juices and sodas.
- Do not drink items with ice cubes.
- Do not brush your teeth with tap water, use purified water

Allergies and Dietary Restrictions

Maranatha provides three vegetarian meals each day. We ask for your allergies on your registration form and will do our best to accommodate your needs. However, on large projects especially, it is harder for our cooks to accommodate special requests. If your diet is very restrictive (vegan, gluten free, etc) we recommend that you bring items such as soy milk powder, gluten-free bread, etc. to supplement the meals provided by the cooks.

ADDITIONAL INFORMATION

Cultural Sensitivity

It's important to enter another culture with respect and understanding of their traditions. Cultural sensitivity also means we will respect Seventh-day Adventist culture in Peru. Adventists in Peru tend to be more conservative than Adventists in the United States and Canada. During the project, we will be sensitive to this by dressing as modestly as possible. Pants and cap sleeves are preferred to shorts and tank tops. For church activities, women will need to have skirts that reach past the knees, and men are expected to wear ties if they are involved in activities on the platform.

Maranatha Lifestyle

Each mission trip is a unique experience, and during the project, there is a great need for flexibility. Volunteers on Maranatha projects come from a variety of backgrounds and lifestyles. As we all become one big family for two weeks, we will need to refrain from some of our personal desires and freedoms and adopt the lifestyle of the group.

On all of our projects we ask that volunteers refrain from using alcohol, tobacco, marijuana or other non-prescription drugs during the trip.

Maranatha projects are open to individuals of all faith backgrounds, and we ask that all volunteers come into the project with an attitude of respect toward one another. During this trip we emphasize service opportunities that grow faith in God. On Maranatha projects, worship services are held on Sabbath (Saturday), and we ask all volunteers to participate in the experience with the group. While we do our best to make provisions to avoid extensive travel or utilizing restaurants on Sabbath, sometimes it is hard to avoid. Please be aware of this and if you have any questions, please speak with your project coordinator.

HOW TO REGISTER

1. Complete online registration form
2. Check email
3. Make payment(s)*
4. Book flights
5. Send itinerary and passport copy to Maranatha

*If for any reason you need to cancel your participation, deposits are refundable up until one month prior to the project (unless noted otherwise). Cancellations within 30 days of the project are subject to a \$150 per-person fee, and the remainder will be refunded depending on the project arrangements already made on your behalf.

CONTACT INFORMATION

Phone: (916) 774-7700

Fax: (916) 774-7701

Email: volunteer@maranatha.org

Website: www.maranatha.org

Mailing Address:

Maranatha Volunteers International
990 Reserve Drive
Suite 100
Roseville, CA 95678

Canadian Payments Only:

Maranatha Volunteers International
Association
c/o V06494C
PO Box 6494, Station Terminal
Vancouver, BC V6B 6R3

PACKING LIST

A checklist of recommended items to take with you on a Maranatha project.

Work Wardrobe

- ☐ Long work pants
- ☐ T-shirts and/or long-sleeved cotton shirts for work
- ☐ Strong, flexible construction gloves (REQUIRED)
- ☐ Hard hat (REQUIRED)
- ☐ Handkerchief or bandana for neck protection
- ☐ Sunglasses or safety glasses
- ☐ Sturdy work shoes

Tool List

The more tools the group brings, the more likely it is that everyone can keep involved in the construction process.

- ☐ Measuring tape (25')
- ☐ Box level (2-3') – one per family
- ☐ Block trowel (10-12") pie-shaped
- ☐ Marking pencils
- ☐ Lineman's pliers - optional
- ☐ Masonry line and line blocks - optional
- ☐ Rubber dish gloves - optional
- ☐ Block hammer - optional

Items to Remember

- ☐ Maranatha t-shirt
- ☐ Passport
- ☐ Photocopies of your passport in checked baggage
- ☐ Copy of your airline ticket or itinerary
- ☐ Copy of final packet with project addresses
- ☐ Face mask(s) or covering(s)
- ☐ Personal prescribed medication (in carry-on) as well as items like Tylenol, Band-Aids, Pepto Bismol etc.
- ☐ Shoes and socks
- ☐ Underclothes
- ☐ Slacks
- ☐ Casual shirts and tops
- ☐ MEN- Dress shirt and tie for Sabbath
- ☐ WOMEN- Dresses and/or skirt and blouse with sleeves for Sabbath
- ☐ Hat for sun protection
- ☐ Sleepwear
- ☐ Shorts
- ☐ Modest swimsuit
- ☐ Jacket and/or sweatshirt
- ☐ Flip-flops or sandals
- ☐ Personal toiletries (soap, deodorant, etc.)
- ☐ Hand sanitizer

- ☐ Insect repellent (30% DEET or higher)
- ☐ Sunblock (SPF 30+)
- ☐ Lip balm (with sunblock)
- ☐ Water bottle (large opening recommended)
- ☐ Bible
- ☐ Camera, batteries, and memory cards
- ☐ Flashlight with extra batteries
- ☐ Washcloth
- ☐ Cash for meals in airports, souvenirs, or special projects that may come up

Optional Items

- ☐ Lightweight daypack or similar bag
- ☐ Neck pillow/eye mask for flight
- ☐ Journal and pens
- ☐ 220-volt converter and plug adapters
- ☐ Spanish/English dictionary or translator
- ☐ Powdered Gatorade or equivalent Nuun or Camelback electrolyte tablets (for overcoming dehydration)
- ☐ Earplugs
- ☐ Small alarm clock
- ☐ Snacks
- ☐ Toilet paper or tissues
- ☐ Battery-run personal fan
- ☐ Small instrument you play
- ☐ Supplemental items for specific diets (gluten free, vegan, etc)

Optional Outreach Items

- ☐ Money for purchasing items locally (this helps the local economy)
- ☐ School supplies: pens, pencils, erasers, notebooks, backpacks
- ☐ Spanish Christian books and pamphlets
- ☐ Spanish Bibles and hymnals
- ☐ Group toys (jump ropes, soccer balls with pumps, etc.)
- ☐ Toothbrushes and toothpastes

Requested Outreach Items

You will receive an updated packing list closer to the project, which will likely include special outreach requests for the children's ministry and medical clinic programs.

THE MARANATHA STORE

BUY MARANATHA MERCHANDISE!

Share the spirit of service with Maranatha-themed apparel and accessories.*

MARANATHA T-SHIRT \$10



This Maranatha shirt is a poly/cotton heather blend by Bella + Canvas. Color is "heather true royal"; unisex sizing.

HARD HAT \$13



This MSA V-Gard hard hat, with Staz-On suspension, ensures excellent shock absorption on the job site.

MARANATHA.ORG

*All confirmed volunteers on an International Maranatha Open Team receive a Maranatha t-shirt as part of their participation fee.



**TO ORDER, VISIT [MARANATHA.ORG/STORE](https://maranatha.org/store)
OR CALL (916) 774-7700**

All prices are excluding sales tax and shipping.

CAP \$12



All cotton and easy to pack, this cap is sure to keep the sun off your face on a mission project and at home. Available in Khaki and Navy.

WATER BOTTLE \$15



The autospout water bottle by Contigo features a one-touch-button spout for convenient one-handed drinking. It also has a spout shield to protect the spout from debris and dirt when not in use—perfect for the project site.

MARANATHA
VOLUNTEERS INTERNATIONAL

