

São Tomé Project

Information Packet

Location: São Tomé and Príncipe

Project Dates: January 11-23, 2018

Participation Fee: \$1,900

(participation fee of \$1,525 and excursion fee of \$375)

Children 12 and Under: \$1,750

(Age determined on the start date of the project)



Flight to São Tomé is not included in the participation fee

Maranatha in São Tomé and Príncipe

According to local church leadership, the Adventist message came first came to São Tomé and Príncipe in 1936 through the work of colporteurs. Today, the country is part of the West Central Africa Division. The island nation has a population of 198,000 people and an Adventist membership of just over 7,000. Maranatha received the request to build in São Tomé and Príncipe and will be responding in 2018 to their ever-growing need. Maranatha has committed to building a new primary school in the city of São Tomé as well as several churches throughout the island.

Project Overview

This will be Maranatha's first volunteer project in the island nation of São Tomé and Príncipe. From the early 1950's until 1975, the Seventh-day Adventist Church operated a school on the island of São Tomé. However, when São Tomé gained independence from Portugal, the new government took over the school buildings. When the facilities were returned to the Church after 15 years, they were unusable.

In October of 2013, a new Adventist school started with just 14 students in grades K-2. It is the only Adventist school in the city of São Tomé. The school started operating in ADRA guest houses that were loaned to the school and converted into classrooms. The President of São Tomé and Príncipe gave the Adventist church a beautiful piece of property for a brand-new school. Parents of the school children and members of the area churches fundraised to construct classrooms of their own. They built a few classrooms but lack the funds to expand the school, and now the government is threatening to seize the land that is not currently occupied by the buildings.

Adventist leadership in São Tomé has reached out to Maranatha for assistance. Volunteers on this project will help construct an

Project Schedule

Thursday, January 11

Arrival in São Tomé

Friday, January 12

Orientation and first work day

Saturday, January 13

Worship with the local congregations

Sunday, Jan. 14 – Friday, Jan. 19

Work days

Saturday, January 20

Worship with the local congregations

Sunday, Jan. 21 – Monday, Jan. 22

Excursion

Tuesday, January 23

Evening departures from São Tomé

eight-classroom One Day School Campus. The structure will be built with insulated panel sheeting walls. This type of construction involves a team that will peel off a protective sheeting on the panels and prepare the edges, as well as a team that will use drills to assemble the structure and secure the panel walls. The school hopes that with the addition of the new classrooms they can increase enrollment to 350 students in grades K-4 as well as add adult education classes.

If enough volunteers join the project, there may be the opportunity to reach out to the local community through activities such as health education or children's ministry programs.

Accommodations

During the project, volunteers will stay at a beautiful hotel called the Miramar by Pestana, located close to the project site in the city of São Tomé.

You can expect double occupancy rooms with private bathrooms. Bedding and towels are provided, although washcloths are not commonly provided in São Tomé, so you should plan on bringing your own. The hotel has hot water, AC, Wi-Fi, and mosquito nets. The hotel is surrounded by beautiful gardens and has a pool to enjoy after a hard day of work. The group will have meals at the hotel and will meet in one of the conference rooms for worship. Together the group will travel to the school construction site each day, which is approximately 5-10 minutes away.

For more information about the Miramar by Pestana Hotel, visit:

<https://www.pestana.com/en/hotel/miramar-by-pestana>

During the excursion, the group will stay at a sister hotel called the Pestana Equador Ilhéu das Rolas. For more information and photos, visit:

<https://www.pestana.com/en/hotel/pestana-equador>

Volunteers should plan on staying in double occupancy rooms with a roommate. If you would like to room with someone in particular, please let us know. During the project, there may be some single occupancy rooms available for an extra cost of \$630 per person for the project participation fee and \$130 per person for the excursion fee. If you are interested in a single occupancy room, please email volunteer@maranatha.org or call (916) 774-7700.

Excursions: Ilhéu das Rolas

At the end of the project, volunteers will travel to the southern part of the island of São Tomé and take a boat to a smaller island off the tip called Ilhéu das Rolas. There, the group will stay at a resort hotel located right on the beach with a pool overlooking the ocean. The group will visit a monument that is built on the equator line and will have the opportunity to relax at the resort or enjoy other activities such as scuba diving or spa appointments at an additional price. This is a two-night trip and the group will be taking a boat to the island. We recommend that volunteers pack for this excursion in a carry-on and leave their larger luggage at the hotel in São Tomé.



Leadership

Karen Godfrey | Project Coordinator

Karen and her family reside in Gold River, California, where she works for Maranatha as vice president of advancement. She has led numerous Maranatha projects; her most recent trips were to Namibia, northern Brazil, India, Zambia, and Kenya. She is excited to share this experience with Maranatha volunteers in São Tomé!



Peter Thomas | Construction Superintendent

Peter joins the group from Fort Worth, Texas, where he works as a home builder and land developer. However, Peter was actually born in Kenya and lived as a missionary's kid in Zimbabwe and Tanzania during the 60's. He has a deep love of Africa, and he is excited to be serving on this project.



Expenses

The total fee of \$1,900 covers housing at the beautiful Miramar by Pestana Hotel, three vegetarian meals a day, ground transportation to and from the airport and project site, translators, local excursions, short-term travel insurance, a Maranatha t-shirt, and luggage tags. For accounting purposes, this fee is broken down into a participation fee of \$1,525 (which is tax-deductible) and an excursion fee of \$375 (which is not tax-deductible).

Maranatha must receive all funds and forms by December 11 due to application processing time. Wait for confirmation of acceptance on the project before purchasing your airfare.

All prices are listed in U.S. dollars. Payments can be made by cash or check sent to the Maranatha office in California (please include your name and "São Tomé Project") or by credit or debit card online or over the phone.

For Canadian tax-deductible receipts, payments must be made by check to the Maranatha Volunteers International (Canada) Association (address located at the end of this information packet). At this time Maranatha cannot issue tax-deductible receipts for credit card payments.

If you are fundraising or receiving donations please either have them sent directly to you or work with your local church treasurer to collect funds and issue tax-deductible receipts, since it is difficult for Maranatha to track individual small checks. If your church will not work with you, please wait until you have collected the full amount of your participation fee before submitting your participation fee to Maranatha.

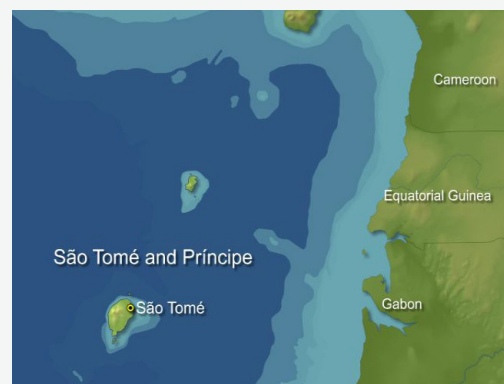
Estimate of Additional Costs

- **Flight to São Tomé: \$1,600 - \$2,200**
- **Passport: \$130 or \$110 for renewal**

About São Tomé and Príncipe

São Tomé and Príncipe is a Portuguese-speaking island nation located off the west coast of Africa in the Gulf of Guinea, due south of Nigeria. The country consists of several island groups surrounding the two larger main islands. It is the second-smallest African country after the country of Seychelles, an island group off the eastern coast of Africa.

The islands were uninhabited until they were discovered by the Portuguese and colonized in the 15th century. The warm equatorial climate and rich soil made it an ideal location for sugar, coffee, and



Facts and Figures

Capital: São Tomé

Population: 197,541

Language: Portuguese and Forro

Climate: Tropical, hot and humid

Religion: Catholic 55.7%,
Adventist 4.1%, Assembly of God
3.4 %

Currency: Dobra

cocoa cultivation. It also became a vital trade depot for the Atlantic slave trade. In 1975 the country achieved independence, and in 1990 São Tomé and Príncipe became one of the first African countries to initiate democratic reform; it has remained one of the most stable and democratic countries of Africa. Its economy is dependent on its agriculture because, due to its island location, the country has to import all fuel, most manufactured goods, and food.

The islands of São Tomé and Príncipe are both part of the Cameroon volcanic mountain line. São Tomé is the larger of the two main islands and is more mountainous with lush forest and cropland surrounding the mountain ranges and ultimately turning into beautiful beaches as it reaches the coastline. The equator runs through the small islet of Ilhéu das Rolas, just south of São Tomé island. This tropical location creates a hot and humid climate year-round.

The culture of São Tomé and Príncipe is a mixture of African and Portuguese influences, as evident in the cultural dances and music. Staple foods include a lot of fish and other forms of seafood as well as beans, corn, and cooked plantains.

Travel Information

Volunteers will purchase their own plane tickets to the city of São Tomé. Maranatha representatives will meet volunteers upon arrival and escort the group to the hotel.

São Tomé is a little more difficult to reach than other African countries as the airport is only open on certain days. Looking online for tickets can result in extremely high fares. We have learned that the best prices are found by working through a travel agent and doing two round trip tickets: one to and from Lisbon, Portugal and one from Lisbon to São Tomé and back. Nathanael at Butler Travel is prepared to help volunteers with this flight.

Please wait for confirmation from Maranatha before purchasing your airfare to ensure there is still space on the project.

Flights

Arrival

Please plan to arrive in São Tomé (airport code TMS) in the evening of Thursday, January 11, 2018.

Departure

Please plan to depart from São Tomé (TMS) in the evening of Tuesday, January 23, 2018.

Arriving Early or Staying Late?

São Tomé has some beautiful travel destinations. Some of you may choose to arrive earlier than January 11 or stay beyond January 23 to explore the country on your own. Please make your own hotel and transportation plans for any days outside of the Maranatha project dates. If you have any questions, feel free to call Maranatha at (916) 774-7700.

Travel Resources

Butler Travel: 503-879-5005 or by email with Nathanael at nathan@butlertravel.com or with Ellen at ellen@butlertravel.com (Maranatha is highly recommending that volunteers use Butler Travel for booking their itineraries as Butler has already researched flight patterns to São Tomé and their agents are prepared to help volunteers)

Azumano Travel: 800-777-5149 or by email with Erle Dpenha or Azumano Team at corporatetravel@ciazumano.com

When contacting the Azumano or Butler travel agencies, make sure you mention Maranatha to receive a discounted service charge.

Entry Requirements

Passport | All passports must be valid for at least six months from the dates of intended travel (July 23, 2018). If you do not have a passport, U.S. citizens can apply at any U.S. post office or online at <http://travel.state.gov>. Canadian citizens can apply online at www.passport.gc.ca. It can take up to two months to complete the entire process, so plan accordingly to give yourself enough time to receive your passport.

Citizens of the United States, Canada, and most European countries do not need a visa to enter São Tomé as long as they are staying 15 days or less. Upon entering the country, each person will be given a free 15-day entry, which should cover the dates of the Maranatha project.

Citizens of other countries should consult the São Tomé and Príncipe embassy or consulate in your home country for entrance requirements.

Staying Healthy

Maranatha requires that every volunteer have a current tetanus vaccine (within the last 10 years). Centers for Disease Control and Prevention (CDC) also recommends vaccines for hepatitis A, typhoid, and an antimalarial medication other than chloroquine. Locals in São Tomé tell us that Malaria is not a big risk on the island; however, the CDC is recommending Malaria preventative medication as a precaution. Maranatha recommends speaking with a travel clinic doctor to talk about the medical risks in São Tomé and the ways to minimize them.

How to Register

To register, please complete the online registration and pay the full participation fee or an initial deposit of at least half the total participation fee. You can make this payment by credit card online or over the phone or with a check made out to Maranatha Volunteers International and sent to the address below. If for any reason you need to cancel your participation, Maranatha will do their best to refund your deposit up until one month before travel. After that point, \$150 is non-refundable and the remainder will depend on the reservations and the project arrangements already made.

Register online at Maranatha.org or over the phone.

Contact Information

Phone: (916) 774-7700

Fax: (916) 774-7701

Email: volunteer@maranatha.org

Website: www.maranatha.org

Mailing Address:

Maranatha Volunteers International
990 Reserve Drive
Suite 100
Roseville, CA 95678

Canadian Payments Only:

Maranatha Volunteers International
Association
c/o V06494C
PO Box 6494, Station Terminal
Vancouver, BC V6B 6R3

THE MARANATHA STORE

BUY MARANATHA MERCHANDISE!

Share the spirit of service with Maranatha-themed apparel and accessories.*

2017 MARANATHA T-SHIRT \$10



This 50/50 blend of polyester and cotton is an ultra-soft, ultra-comfy unisex T-shirt that feels like you've owned it for years. Represent Maranatha anywhere you go!

HARD HAT \$11



This MSA V-Gard hard hat, with Staz-On suspension, ensures excellent shock absorption on the job site.

MARANATHA.ORG

*All confirmed volunteers on an International Maranatha Open Team receive a Maranatha t-shirt as part of their participation fee.



**TO ORDER, VISIT MARANATHA.ORG/STORE
OR CALL (916) 774-7700**

All prices are excluding sales tax and shipping.

CAP \$12



All cotton and easy to pack, this cap is sure to keep the sun off your face on a mission project and at home.

WATER BOTTLE \$15



The autospout water bottle by Contigo features a one-touch-button spout for convenient one-handed drinking. It also has a spout shield to protect the spout from debris and dirt when not in use—perfect for the project site.

MARANATHA
VOLUNTEERS INTERNATIONAL

